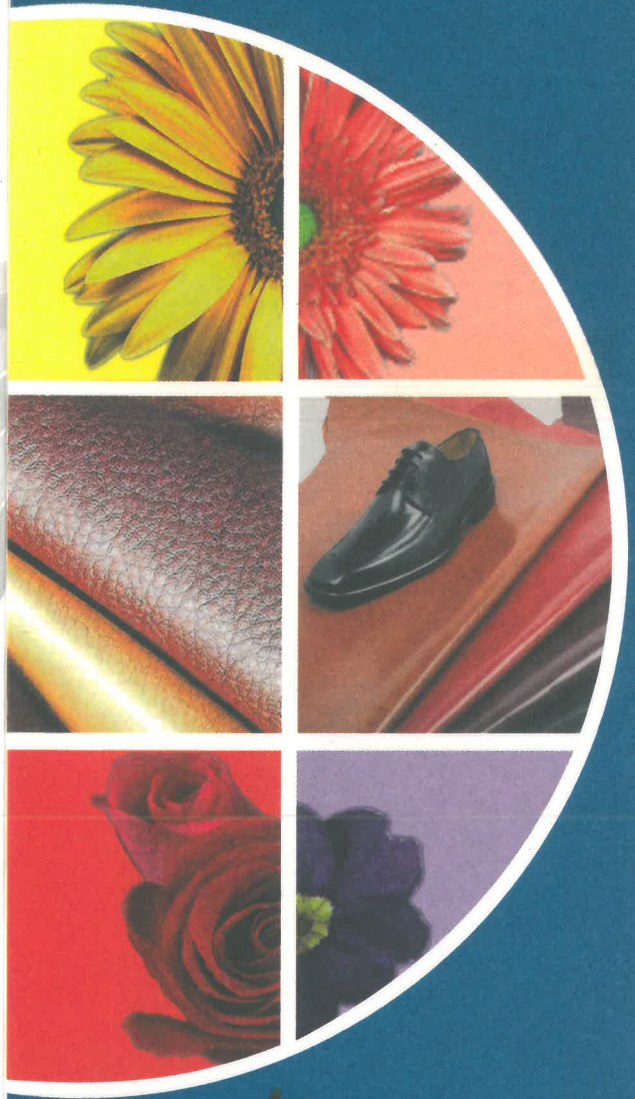
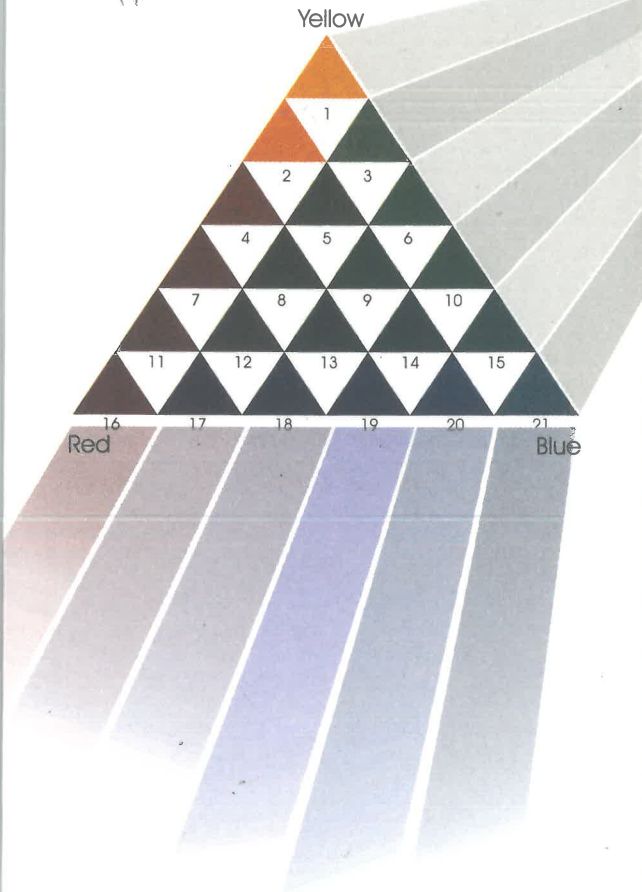


Bodalyn Dyes for Leather

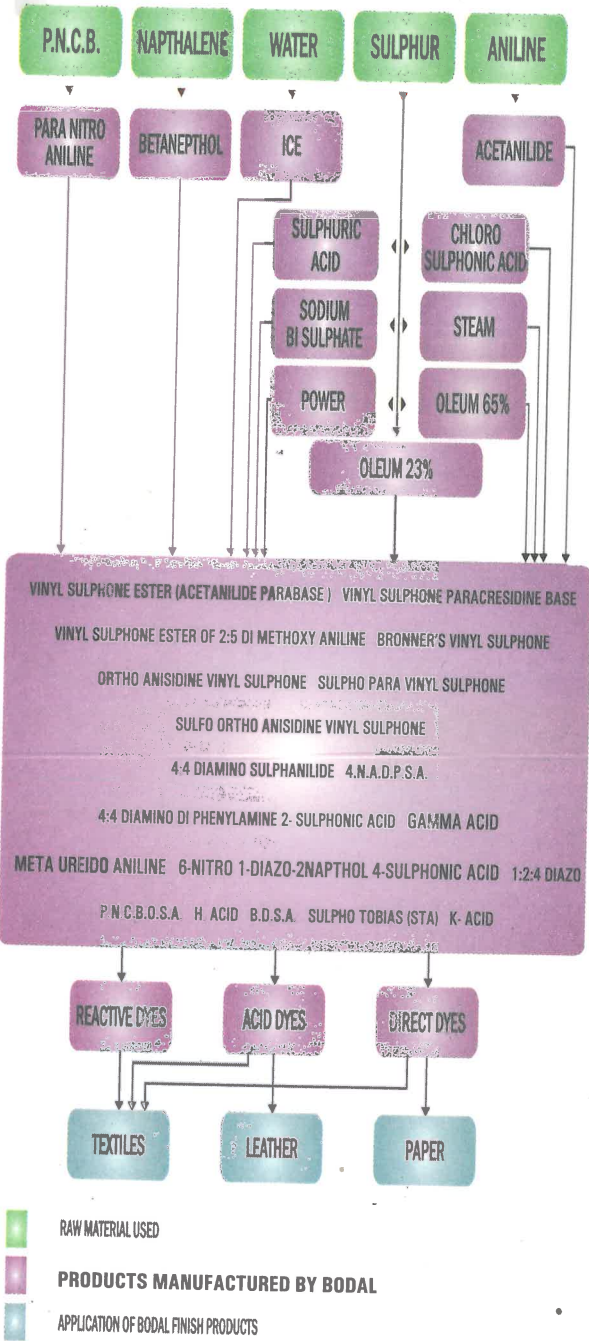
Trichromatic Shade



Bodal Chemicals Ltd.
Colours. Integration. Innovation
Best integrated Leather Dyes Company in India.



BODALS ACTIVITY FLOW CHART



■ RAW MATERIAL USED
■ PRODUCTS MANUFACTURED BY BODAL
■ APPLICATION OF BODAL FINISH PRODUCTS

Selection of Dyes as per the Finishing of Leather :

Demands for leathers with very low finishes are increasing with only dyed look. To meet this demands high quantities of dyes are used during leather wet processing. So, the selection of dyes becoming very important nowadays! Since these leather are finished with very light or no pigments and sometimes different types of Oils and waxes are used to get some special feels and look to the leather article, special care should be taken to select the dyes.

Oils and waxes contains some solvents and excessive use of oils / waxes may cause migration of dyes in to it. These sometimes results a different patches on the finished leathers. So, it is necessary that the tanner should check the compatibility of the dyes with their finishing systems before bulk production.

We have included mostly homogeneous dyes with consistent quality in this shade card but we strongly recommend to test the compatibility of finishing systems with dyes in small leather pieces before bulk lot production.

Benefits of these dyes are :

- ◆ Excellent Dye yield and brilliant shades.
- ◆ Very cost effective as Bodal is also manufacturer & Exporter of most of the Dye in intermediates.
- ◆ Very good compatibility and levelness with good exhaustion properties.
- ◆ Mostly homogeneous and dyes with one C.I.

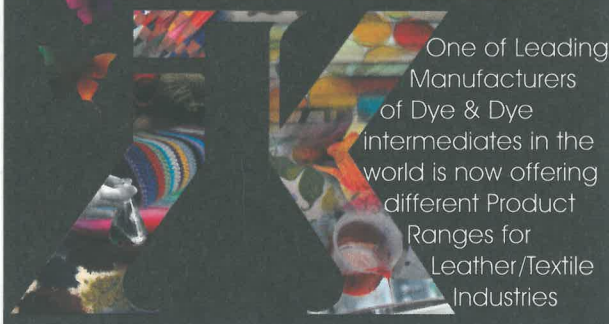


Government of India Recognized Export House

GOTS Certificate

REACH Pre Registration

Bodal Chemicals Ltd.



One of Leading Manufacturers of Dye & Dye intermediates in the world is now offering different Product Ranges for Leather/Textile Industries



Bodal Chemicals Ltd.



Dyestuff Division

1011, Venus Atlantis Prahlad Nagar
 Ahmedabad- 380015 (INDIA)
 Tel: +91 79 40503456 Fax: +91 79 40503457
 e-mail: dyestuff@bodal.com
 Website: www.bodal.com

Recipe

Dyeing with full penetration

Substrate : F/Cr. Cow Re-tanned Leather.
 % Based on : Shaved Wt. Customer :
 Origin : Indian Cow Development :
 Thickness : 1.1 / 1.2 mm Technican :

	%	Chemicals	Temp.	Time	Remarks
Wet Back :	200	Water	40		
	0.5	Wetting Agent		10	
	+ 0.5	Formic Acid		20	Ph 3.8 D/Wash
	150	Water	40		
Re-Chroming	4%	Chrome Sytan			
	2%	BCS			
	0.5	Cat. Fat Liq		45	
	+ 1	Sod. Formate			
	0.5	Sod.bicarbonate		45	ph 4.0 D/W
Neutralization	150	Water	40		
	1	Bodatan AKM		10	
	+ 1	Sod. Formate			
	0.5	Sod. Bicarbonate		60	ph 5.5 D/W
Retanning	100	Water	40		
	2	Bodatan RE			
	0.5	Bodalq. ASN		30	
	+ 6	Bodatan OS			
	4	GS Powder		30	
	+ 4	Bodatan R7		30	
	+ 1	Bodatan PR		20	
	+ 0.5	Formic Acid		20	Drain
Dyeing &					
Fatliquoring	150	Water	50		
	1	Bodagen DP		10	
	3/4th	Dye **		30	Check penetration
	+ 3	Bodalq. ASN			
	2	Bodalq. PN			
	0.5	Boda Oil CP		30	
	+ 1	Formic Acid		5+5+20	Check, Drain
	150	Water			
**Top Dye	+ 1/4th	Dye **		20	
		Formic Acid		10+20	Drain, Wash, Pile up.
Horse up , set out , vacuum dry , hang to dry , condition , stake, toggle.					
With out obligation					

Colour Fastness and general Properties		Fastness to Light-UV 402/60h	Fastness migration into plasticized PVC-UV 442	Fastness to Washing	Fastness to Perspiration	Wet rub fastness	Dry rub fastness	Penetration	Solubility at 60 deg. C g/l UV 201	Metal Free	Furniture Upholstery	BODALYN DYESTUFFS	BODALYN DYESTUFFS
BODALYN												Light Shade	Dark Shade
1	Yellow G	3	3	Alt. 1 Co.3 Wo.4	3 4-5 1	3-4.	4	3	40				
2	Yellow GN	3-4	2	Alt. 3 Co.4 Wo.3	3 3 4		3	4	4	50			
3	Yellow M3RL Co.	5	4	Alt. 4 Co.4-5 Wo.5-6	3 2-3 3-4	3-4.	4	4	60				
4	Yellow MR	4-5	2-3	Alt. 2 Co.4-5 Wo.3	5 3 3-4	3-4	4	3	60				
5	Orange GR	4	2-3	Alt. 2 Co.3 Wo.3-4	4 5 4		3	4	3	40			
6	Orange MRL	3	2-3	Alt. 2 Co.4-5 Wo.4-5	4 2-3 2		3	4	4	60			
7	Red G	2	2-3.	Alt. 1 Co. 4 Wo.4	2 3 2		3	4	3	50			
8	Red A	3-4.	2	Alt. 2 Co.3 Wo.2	3 2 3		3	4	2-3.	50			
9	Red 5BS	3-4.	2	Alt.1 Co.3 Wo.4	2 2 2		3	3-4.	2	60			
10	Scarlet 6BS	2-3.	2-3	Alt.5 Co.4 Wo.5	4 2-3. 5		3	4	4	50			
11	Red 3BN	2	3	Alt.1 Co.2 Wo.1	2 2 2		3	3-4.	2-3.	50			
12	Maroon V	2	3	Alt.1 Co.4 Wo.4	4 4 1		3	3-4.	3	50			
13	Bordeaux MB	2-3.	3	Alt.2-3 Co.2-3 Wo.4	3-4 3-4 4-5		3	3-4.	4	50			
14	Bordeaux BL	3	2-3	Alt.3 Co.4 Wo.3	4 4 3-4	2-3	3-4	4	50				
15	Scarlet MGL	4	2-3.	Alt.2 Co.4-5 Wo.4-5	2 2 3		4	3-4.	3	50			
16	Pink B	3	2	Alt.1 Co.2 Wo.1	2 2 2	3-4.	4-5.	3-4.	50				
17	Beige RU	3-4.	3	Alt.3-4 Co.3 Wo.3	2-3 3 3	3-4.	4-5.	3-4.	50				

With our obligation

Colour Fastness and general Properties	Fastness to Light-UV 402/80h	Fastness migration into plasticized PVC-UV 442	Fastness to Washing	Fastness to Perspiration	Wet rub fastness	Dry rub fastness	Penetration	Stability at 60 deg. C 90 min-UV 201	Metal Free	Furniture Upholstery	BODALYN DYESTUFFS	BODALYN DYESTUFFS
											Light Shade	Dark Shade
18 Brown TW	3	3	Alt.3 Co.4 Wo.3	4 4 3-4	3-4	4-5	4	50				
19 Brown NGB	5	3	Alt.5 Co.4-5 Wo.4	2 1 2	3-4	4	3	60				
20 Brown GOL	4-5	3-4	Alt.3 Co.4 Wo.3	3-4 3 3	3-4	4-5	4	50				
21 Brown TL	4-5	2-3	Alt.5 Co.4-5 Wo.4	3 3 3	3-4	3	3	60				
22 Brown AT	3-4	3	Alt.3 Co.2-3 Wo.4-5	4 2-3 2	3	4	3	60				
23 Brown 2RL	4-5	4	Alt.2 Co.2-3 Wo.3-4	4-5 2-3 4	4-5	3-4	3	50				
24 Brown 3G	4-5	4	Alt.2 Co.2-3 Wo.3-4	4-5 2-3 5	3-4	4-5	4	50				
25 Brown RD	2-3	3-4	Alt.2 Co.2-3 Wo.4-5	1 2 2	3-4	4	3	50				
26 Brown SR	3-4	3	Alt.2 Co.2 Wo.3	1 2-3 1	3-4	4	3	60				
27 Brown MFR	3-4	3	Alt.4 Co.3 Wo.3	2 2 2	3-4	4-5	3	60				
28 Brown SGR	4	3	Alt.-1-2 Co.4 Wo.3	2 2 2	3-4	4	3	50				
29 Brown RL	4-5	4	Alt. 2 Co.2-3 Wo.3-4	4-5 2-3 5	3-4	4-5	4	50				
30 Brown NR	4	2-3	Alt. 3 Co. 2 Wo.2-3	3 3 1	3	3-4	4	50				
31 Brown DS	4-5	3-4	Alt. 5 Co.4-5 Wo. 4	2 1 2	3-4	4-5	3	60				
32 Brown NT	4-5	3-4	Alt. 5 Co. 4 Wo.1-2	4 3 2-3	3-4	4	5	60				
33 Brown SG	3	2-3	Alt. 2 Co. 2 Wo.3	1 2-3 1	2-3	3-4	3	60				
34 Brown HBR	3-4	3	Alt.1-2 Co.4 Wo.3	3 2 2	3-4	4-5	3	50				

Colour Fastness and general Properties		Fastness to Light: IUF 402/80h	Fastness migration into plasticized PVC: IUF 442	Fastness to Washing	Fastness to Perspiration	Wet rub fastness	Dry rub fastness	Penetration	Solubility at 60 deg. C g/l IUF 201	Metal Free	Furniture Upholstery	BODALYN DYESTUFFS	
BODALYN												Light Shade	Dark Shade
35	Brown 2BL	4	3	Alt.3 Co.2-3 Wo.4	4 2-3 4	3	3-4.	3	50				
36	Brown MBR	4	3	Alt. 3-4 Co.4 Wo.5	4 3 2-3	3	4	5	60				
37	Brown KN	2-3.	3	Alt.4-5 Co.4-5 Wo.4-5	4-5 4-5 4	3-4.	4-5.	4	50				
38	Brown M2 RL	4	3	Alt.3-4 Co.3-4. Wo.4	3-4. 3 4	3-4.	4-5.	4	50				
39	Brown CR	4	3	Alt. 1 Co. 3 Wo. 3	3 3 2	3-4.	4	3	50				
40	Coffee Brown	4	3-4	Alt.4 Co. 4-5 Wo.3-4	4 4 3-4	3-4.	4	4	50				
41	Olive Brown BL	4	2-3.	Alt.2-3 Co. 3-4 Wo. 4	4-5 2-3 5	3-4.	4	4	50				
42	Brown HEDG	3-4	3-4	Alt.2-3 Co. 3-4 Wo. 4	4-5 2-3 5	3-4.	4-5	3	60				
43	Olive Brown 5G	3-4.	3	Alt. 3 Co. 3-4 Wo.3	3 2 2	3-4.	4	4	60				
44	Olive Green SGL	3-4.	2	Alt.3-4 Co.3 Wo.4	2 2 1	4	4-5.	3-4.	50				
45	Green BS	3-4.	3	Alt.3-4 Co.3 Wo.4	2 2 1	3	4	3	40				
46	Dark Green B	4	2-3	Alt.1 Co.3 Wo.4	2 1 1	3-4.	4	4	50				
47	Green N	4	3	Alt.1 Co.3 Wo.4	2 1 1	3	4	4	50				
48	Green V	3	2-3	Alt.2 Co.2 Wo.3	1 2 2	3	3-4.	4	40				
49	Light Green	3-4	3	Alt.2 Co.2 Wo.3	3 2 2	3	4.	4	50				
50	Turq. Blue SBL	2	3	Alt.2 Co.3 Wo.2	2-3 1-2 2	3	3-4.	3	40				
51	Blue 2RL	2	2	Alt.1 Co.2-3 Wo.2	2 1 1	2-3.	3-4.	3	40				

With our obligation

Colour Fastness and general Properties	Fastness to Light- IUF 402/80h	Fastness migration into plasticized PVC-IUF 442	Fastness to Washing	Fastness to Perspiration	Wet rub fastness	Dry rub fastness	Penetration	Solubility at 60 deg. C g/l IUF 201	Metal Free	Furniture Upholstery	BODALYN DYESTUFFS	BODALYN DYESTUFFS
											Light Shade	Dark Shade
52 Navy Blue	4	3	Alt.3-4 Co.3 Wo.4	2-3 3 3	3	3-4.	4	40				
53 Blue S5R	5	3	Alt.3 Co.3-4 Wo.3-4	3 2 3	3-4.	4-5.	4	40				
54 Violet 4BS	2-3.	2-3	Alt.2 Co.1-2 Wo.2	2-3 2 2	2-3.	3	3	40				
55 Black JBX	4	2	Alt.1 Co.3 Wo.4	2 1 1	2-3.	3	3	40				
56 Grey G	2-3	3	Alt. 1 Co. 3 Wo. 4	2 2 2	3-4.	4-5	3	80				
57 Black NTC 135	4-5	4	Alt.3-4 Co.3 Wo.3	2 3 2	3-4.	4-5.	4	80				
58 Black NTC 160	4-5	4	Alt.3-4 Co.3 Wo.3	2-3 3 2-3	3-4.	4-5.	4	80				
59 Black NT	4-5	4	Alt.3-4 Co.3 Wo.3	2 3 2	3-4.	4-5.	4	80				
60 Black SBL	4-5.	4	Alt.4-5 Co.4 Wo.4-5	4-5 4 4	3-4.	4	4	60				
61 Black MSRL	3-4.	4	Alt.4-5 Co.2-3 Wo.1-2	2 1 3	3-4.	4-5.	4	80				
62 Black HBN	4	3-4.	Alt.2 Co.1 Wo.3	4-5 3 3	4	4-5.	4	60				
63 Black BT	4-5	4.	Alt.2 Co.2 Wo.3	1-2 2 2	3-4.	4	4	60				
64 Jet Black	4-5.	4-5	Alt.3 Co.2-3 Wo.2	3 3-4 2	3	4	4	60				
65 Black BL	3-4.	4-5	Alt.3 Co.2-3 Wo.3-4	3-4 3 3	3-4.	4	4	60				
66 Black VT	3-4.	4-5	Alt.3 Co.2-3 Wo.3-4	3-4 3 3	3-4.	4	4	60				